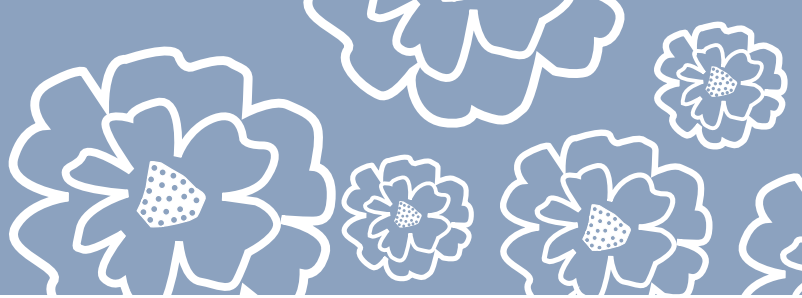


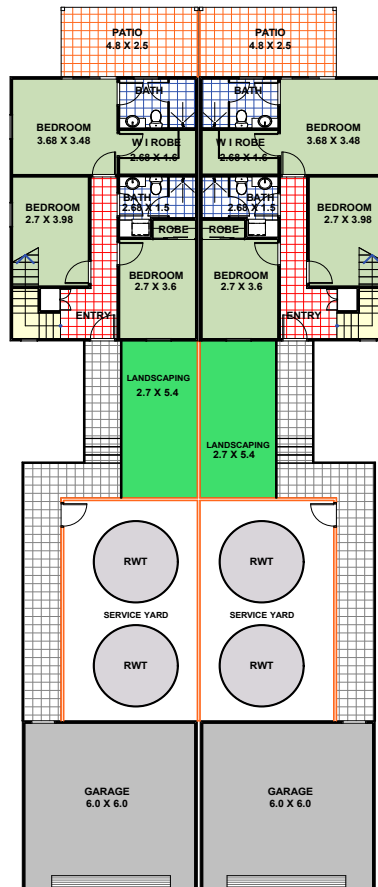
# Grindal (Duplex)



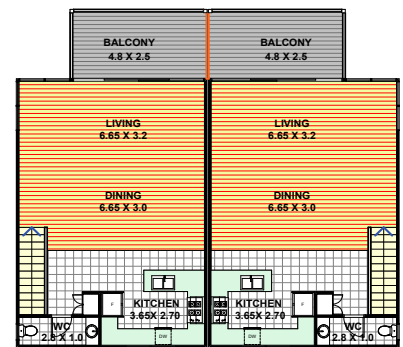
## 3 bedrooms, 2 bathrooms, 1 powder room and double garage.

Purchase price includes:

- Fixed price contract
- Plan adjustments to suit your allotment
- All planning and building authority fees
- European stainless steel appliances
- Designer tapwear and accessories
- Floor coverings
- Reverse cycle, split, day/night air-conditioning system
- Fresh water and recycled water systems



Ground Floor



First Floor

### Grindal (m2) each dwelling

Ground Floor	64.20
First Floor	66.0
<b>Total</b>	<b>130.20</b>
Patio	12.30
Landscaping	15.70
Balcony	12.30
Garage	38.50
<b>Total</b>	<b>78.80</b>
<b>Total Area</b>	<b>209.0</b>



Front Elevation



Rear Elevation



Side Elevation



The content in this brochure is subject to change from time to time. Images are for display purposes and may vary from actual as designs change. Illustrations are artist's impressions only and photos are for display purposes only. Building dimensions include decks, patios, balconies etc and are measured from the outside face of walls. All information and measurements were correct at time of printing. Any errors are unintentional and will be amended at the time of next printing.